

COUNTY OF LOS ANGELES

ROAD DEPARTMENT

PRECISE

BENCH MARK LIST



BELLFLOWER QUAD

1965 ADJUSTMENT

PREFACE

The Road Department level net is composed of more than 1,000 miles of levels supporting in excess of 10,000 bench marks. In 1964-65, a major readjustment of the net was undertaken. To emphasize the complete break with previous elevations, the SY, SG & SL series bench marks have been re-labeled BY, BG & BL, respectively.

To facilitate the adjustment, indexing, and distribution of adjusted values of the net, the County territory was divided into 31 quads or areas. For identification purposes each quad was given a name, viz., "Rosemead," "La Mirada," "Santa Fe," etc. When bench marks and elevations in the Road Department net are used, the name of the quad in which the bench mark is located and the date of the adjustment of the elevation must be included in the bench mark description, e.g.,

BG 1887 --L+BN IN CONC HDWL OF DRAIN PIPE UNDER DR 218 FT
NE +18 FT SE C/L INT GRAND AVE +CAMERON AVE MKD (BM)
(COVINA ---1965) ELEV. 696.238

It is expected that this general adjustment will, for the most part, remain sound for the next 8 to 12 years. As new circuits are completed, however, re-adjustment of individual quads may become advisable. It is expected that these subsequent adjustments will be in the nature of a few hundredths of a foot. When a quad is re-adjusted, new elevation lists will be published and the date of the re-adjustment will replace the "1965" at the end of the bench mark description. Two bench marks in the same quad with different adjustment dates will not normally join each other. Since all adjustments taper out to nothing at the periphery of the quad, any bench mark in one quad will join any bench mark in another quad regardless of their respective adjustment dates.

The basic accuracy of the net is reflected by an indicated field probable error of plus or minus 0.012 foot per mile of leveling as determined from 298 conditions of closure. However, many years experience in vertical control in the greater Los Angeles basin and Antelope Valley indicate that because of varying degrees of subsidence and heaving, the true datum is recovered only by obtaining substantial agreement of a number of bench marks.

The users of this net are invited to assist in its maintenance by notifying this Department of cases of obliteration, apparent mistakes in descriptions or elevations, and proven disturbance of bench marks.

DATUM: U. S. Coast and Geodetic Survey Sea Level Datum
of 1929, through the medium of the Los Angeles
County Engineer Precise Level Net, 1963 Adjust-
ment.

ABBREVIATIONS USED IN BENCH MARK LISTINGS

ABUT - - - - -	Abutment	EC - - - - -	End of Curve
ALG - - - - -	Along	ENT - - - - -	Entrance
ANG PT - - - - -	Angle Point	FL - - - - -	Floor
B/W - - - - -	Back of Walk	FTG - - - - -	Footing
BCR - - - - -	Beginning of Curb Return	F/W - - - - -	Front of Walk
BC - - - - -	Beginning of Curve	GAR - - - - -	Garage
BLDG - - - - -	Building	HDWL - - - - -	Headwall
BM - - - - -	Bench Mark	HSE - - - - -	House
BT SPK - - - - -	Boat or Bolt Spike	INT - - - - -	Intersection
BR CAP - - - - -	Brass or Bronze Cap	IP - - - - -	Iron Pipe
C B - - - - -	Catch Basin	LT - - - - -	Left
CTR - - - - -	Center	LACE - - - - -	L. A. City Engineer
C/L - - - - -	Center Line	LACS - - - - -	L. A. County Engineer
C/L INT - - - - -	Center Line Intersection	LAFC - - - - -	L. A. Co. Flood Control
C/L PROD - - - - -	Center Line Produced	L+BN - - - - -	Lead and Bench Nail
CONC - - - - -	Concrete	L+BR - - - - -	Lead and Brad
COR - - - - -	Corner	L+N - - - - -	Lead and Nail
COE - - - - -	Corps of Engineers	L+RDBM TAG - - - - -	Lead and Road Dept. Bench Mark Tag
CULV - - - - -	Culvert	L+SPK - - - - -	Lead and Spike
CB - - - - -	Curb	L+T - - - - -	Lead and Tack
CS MON - - - - -	County Engineer Monument	MCR - - - - -	Middle of Curb Return
CS BR CAP - - - - -	County Engineer Brass Cap	MKD - - - - -	Marked
CT SPK - - - - -	Cut Spike	MC - - - - -	Middle of Curve
DR - - - - -	Drive or Driveway	MON - - - - -	Monument
E/O - - - - -	East of	N/O - - - - -	North of
ECR - - - - -	End of Curb Return	NR - - - - -	Near

ABBREVIATIONS USED IN BENCH MARK LISTINGS ° ° ° CONTINUED

OPP - - - - - Opposite
PI - - - - - Point of Intersection
PK+W - - - - - PK Nail and Washer
P/L - - - - - Property Line
POST - - - - - Point on Semi-Tangent
PP - - - - - Power Pole
PVMT - - - - - Pavement
PROD - - - - - Produced
RD - - - - - Road
RDEM - - - - - Road Dept. Bench Mark
RR - - - - - Railroad
RT - - - - - Right
R/W - - - - - Right of Way
SDMH - - - - - Storm Drain Manhole
SMH - - - - - Sewer Manhole
SPK - - - - - Spike
ST+W - - - - - Spike Tin and Washer
S/O - - - - - South of
TP - - - - - Telephone Pole
USC+GS - - - - - U. S. Coast and Geodetic Survey
USGS - - - - - U. S. Geological Survey
WK - - - - - Walk
W/O - - - - - West of

QUAD

NORWALK

QUAD

ART

BLVD

BLVD

ALONDRA

BLVD

VER
QUAD

ARTESIA AVE

ASHWORTH AVE

FLORA VISTA AVE

ARTESIA AVE

ALLINGTON ST

SOUTH ST

LAKEWOOD

QUAD

CARSON

STREET

SPRING

STREET

ESSIA

QUAD

QUAD

1 MILE



ROAD

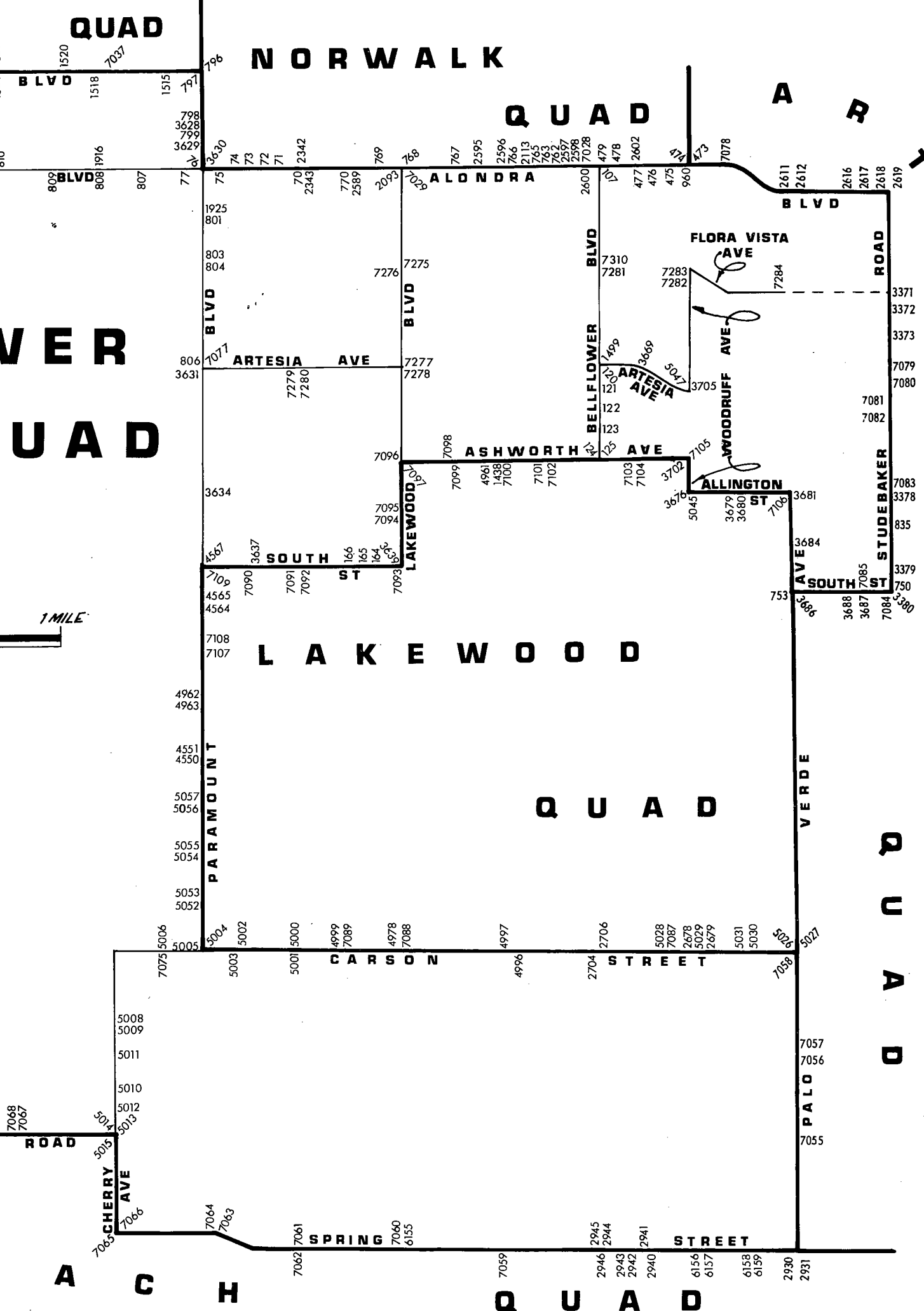
CHERRY AVE

VERDE

PALO VERDE

ACH

QUAD



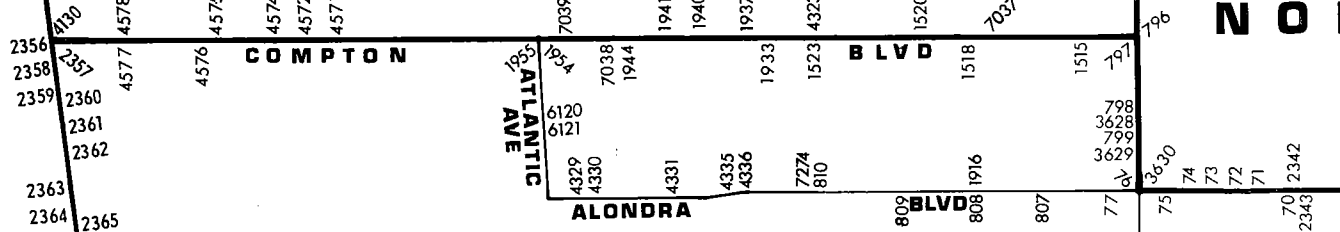
SOUTH

GATE

QUAD

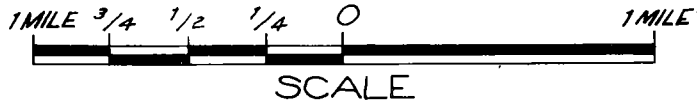
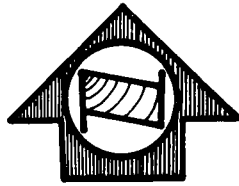
NOI

QUAD



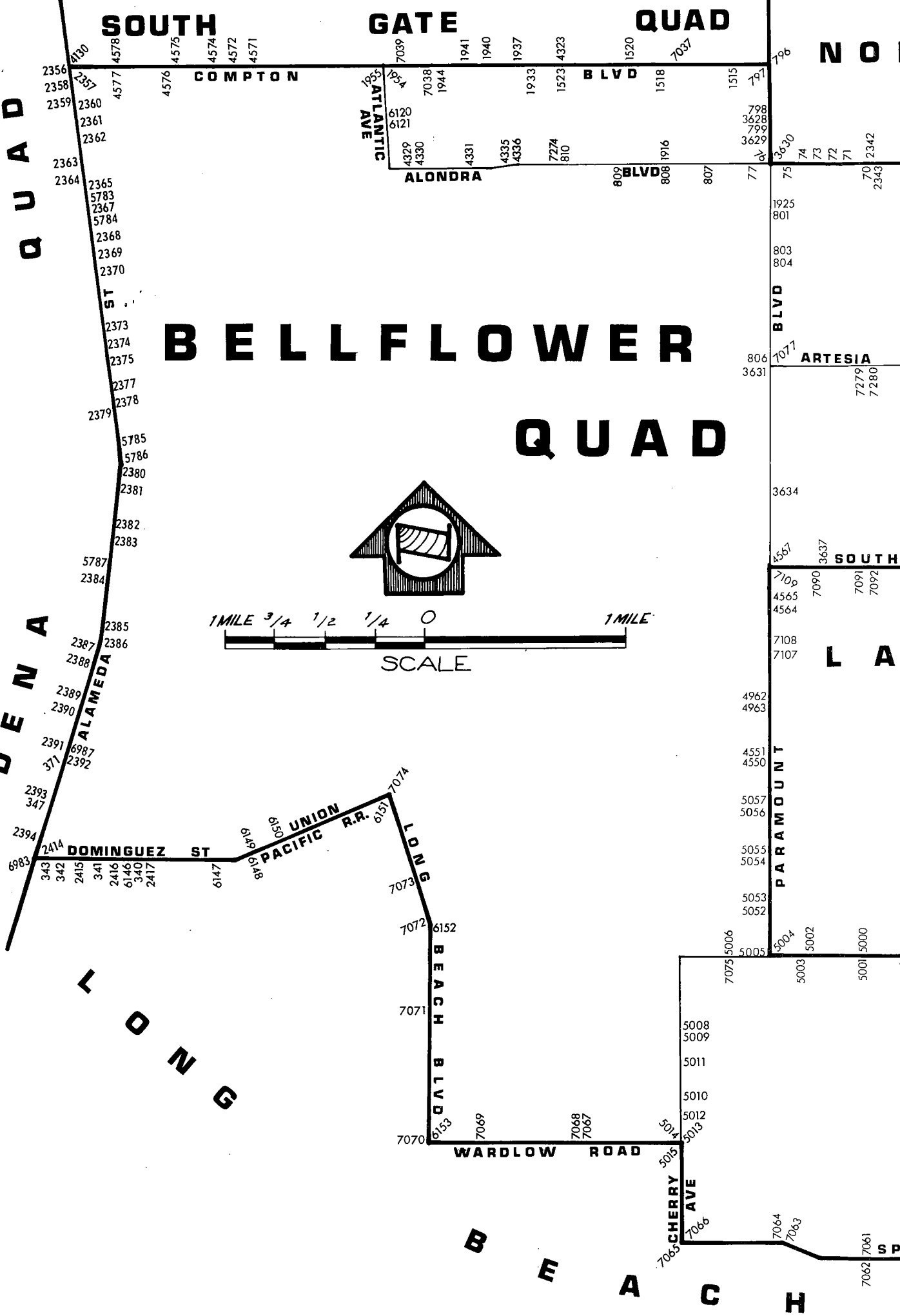
BELLFLOWER

QUAD



GARDENA

LONG



LA

B E A C H

SP

QUAD-YEAR	ELEV	DESCRIPTION (INCLUDE QUAD AND YEAR IN DESCRIPTION)	BM	NUMBER
BASELINE (1965)	66.333	L+T C/L PVMT ALONDRA BLVD 100FT± W C/L DOWNEY AVE	BY	70
BASELINE (1965)	66.958	L+T C/L INT INDIANA AVE + ALONDRA BLVD	BY	71
BASELINE (1965)	67.566	CUT SPK 6FT± N C/L INT VIRGINIA AVE + ALONDRA BLVD	BY	72
BASELINE (1965)	68.169	BT SPK PVMT 7FT± N C/L INT GEORGIA AVE + ALONDRA BLVD	BY	73
BASELINE (1965)	68.691	SPK PVMT 7FT± N C/L INT CRIZABA AVE + ALONDRA BLVD	BY	74
BASELINE (1965)	68.426	SPK PVMT 8FT± N C/L INT CALIFORNIA AVE + ALONDRA BLVD	BY	75
BASELINE (1965)	68.403	L+T INDC ALONDRA BLVD 15FT± W OF CB RET @ NW COR ALONDRA BLVD + PARAMOUNT BLVD	BY	76
BELLFLWR (1965)	68.224	L+T PVMT 14FT± S + 19FT± W C/L INT COLORADO AVE + ALONDRA BLVD	BY	77
BASELINE (1965)	74.381	L+T SW STRADLER INT BELLFLOWER BLVD + CENTER ST	BY	107
BELLFLWR (1965)	64.910	L+BR T NR CTR CB RET @ SW COR ARTESIA AVE + BELLFLOWER BLVD 5FT± S CTR CB RET	BY	120
BELLFLWR (1965)	63.648	FC BM 2FT± N CB RET NE COR RAMONA AVE + BELLFLOWER BLVD MKD (74-190)	BY	121
BELLFLWR (1965)	61.916	L+BN 1FT±N CB RET @ NW COR CEDAR AVE + BELLFLOWER BLVD	BY	122
BELLFLWR (1965)	60.332	L+SPK 5FT±N CB RET @ NW COR ROSE AVE + BELLFLOWER BLVD	BY	123
BASELINE (1965)	59.183	L+T 1FT± W CB RET @ NW COR ASHWORTH ST + BELLFLOWER BLVD	BY	124
BASELINE (1965)	58.825	RDBM TAG E CB 1FT± N BCR @ NW COR BELLFLOWER BLVD + ASHWORTH ST 56FT±N + 4 FT± C/L INT	BY	125
BASELINE (1965)	53.439	L+T W CB 1FT± N CB RET @ NW COR OLIVA AVE + SOUTH ST	BY	164
BASELINE (1965)	53.048	L+T N CB SERVICE RD 2FT± W CB RET @ NW COR CASTANA AVE + SOUTH ST	BY	165
BASELINE (1965)	52.738	L+T N CB SERVICE RD 1FT± W CB RET @ NW COR HAYTER AVE + SOUTH ST	BY	166
BASELINE (1965)	32.793	L+T CTR CB RET @ SW COR SANTA FE AVE + DOMINGUEZ ST	BY	340
BASELINE (1965)	31.378	L+SPK 5FT± S CB RET @ SE COR PROSPECT AVE + DOMINGUEZ ST	BY	341
BASELINE (1965)	30.835	L+T 6FT± S CB RET @ SE COR HARBOR VIEW AVE + DOMINGUEZ ST	BY	342
BASELINE (1965)	31.479	L+T S CB 30FT± W C/L ALLEY BETWEEN HARBOR VIEW AVE + ALAMEDA BLVD ON DOMINGUEZ ST	BY	343
BASELINE (1965)	31.717	L+T E HDWL TRACK 68FT± W C/L ALAMEDA ST 1400FT± N DOMINGUEZ ST	BY	347

QUAD-YEAR	ELEV	DESCRIPTION (INCLUDE QUAD AND YEAR IN DESCRIPTION)	BM NUMBER
BASELINE (1965)	37.301	L+T NW COR SP SIGNAL SWITCH BOX NO 4972 35FT± S C/L DEL AMO BLVD + 25FT± E C/L MAIN LINE SPRR	BY 371
BASELINE (1965)	73.221	CS REF MON IN WELL 14IN DN ON NE COR ALONDRA BLVD + WOODRUFF BLVD 56FT± N + 60FT± E C/L INT MKD (CLEARWATER K 2A)	BY 473
BASELINE (1965)	73.839	CSBM MON FLUSH ON NE COR ALONDRA BLVD + WOODRUFF AVE 39FT± N + 180FT± W C/L INT MKD (BM 6-6A1958)	BY 474
BASELINE (1965)	74.577	L+N 8CFTS8 S C/L ALONDRA BLVD W CB CORNUTA AVE	BY 475
BASELINE (1965)	74.859	L+N W CB EUCALYPTUS AVE 80FT± S C/L ALONDRA BLVD	BY 476
BASELINE (1965)	74.809	L+N E CB EUCALYPTUS AVE 80FT± S C/L ALONDRA BLVD	BY 477
BASELINE (1965)	75.268	L+T E CB LEAHY AVE 80FT± N C/L ALONDRA BLVD	BY 478
BASELINE (1965)	75.247	L+T W CB LEAHY AVE 80FT± N C/L ALONDRA BLVD	BY 479
BASELINE (1965)	49.420	SW ONE OF 4 L+T STUBS NR C/L INT STUDEBAKER RD + SOUTH ST	BY 750
BASELINE (1965)	51.168	CT SPK CONC 14FT± S C/L SOUTH ST 85FT± W C/L PALO VERDE AVE	BY 753
BASELINE (1965)	72.811	L+T INT ORCHARD AVE + ALONDRA BLVD	BY 762
BASELINE (1965)	71.855	L+T 2FT± W CB RET NW COR RYON AVE + ALONDRA BLVD	BY 763
BASELINE (1965)	73.760	L+BN S CB ALONDRA BLVD 6IN E CB RET @ SE COR ALONDRA BLVD + PACIFIC AVE 70FT± W PERR	BY 765
BASELINE (1965)	68.648	L + SPK 4FT± E CB RET @ NE COR CLARK AVE + ALONDRA BLVD	BY 766
BASELINE (1965)	69.642	L+T C/L INT VIRGINIA DR + ALONDRA BLVD	BY 767
BASELINE (1965)	69.473	L+T C/L INT LAKEWOOD BLVD + ALONDRA BLVD	BY 768
BASELINE (1965)	68.433	L+T C/L INT PITTS AVE + ALONDRA BLVD	BY 769
BASELINE (1965)	67.561	L+T C/L HAYTER AVE 8FT± S C/L ALONDRA BLVD	BY 770
BASELINE (1965)	72.660	BT SPK 1FT± S CB RET SE COR PARAMOUNT BLVD + 1ST ST	BY 796
BASELINE (1965)	72.360	CS MON 17FT± W INT PARAMOUNT BLVD + COMPTON BLVD	BY 797
BASELINE (1965)	72.397	L+T CTR CB RET SE COR PARAMOUNT BLVD + ADAMS ST	BY 798
BASELINE (1965)	68.622	L+T W CB PARAMOUNT BLVD 2FT± N CB RET @ NW COR MADISON ST + PARAMOUNT BLVD	BY 799
BELLFLWR (1965)	66.035	SPK NR C/L PARAMOUNT BLVD 28FT± N C/L JACKSON ST	BY 801

QUAD-YEAR	ELEV	DESCRIPTION (INCLUDE QUAD AND YEAR IN DESCRIPTION)	BM	NUMBER
BELLFLWR (1965)	65.664	L+T E CB 5FT± N BCR @ NE COR PARAMCUNT BLVD + 70TH ST 57FT± N + 33FT± E C/L INT	BY	803
BELLFLWR (1965)	65.330	CITY OF LONG BEACH MON IN WELL 6IN DN @ OR NR C/L INT PARAMOUNT BLVD + 70TH ST	BY	804
BELLFLWR (1965)	60.882	L+T CTR CB RET 6IN± E L+BRAD @ NW COR ARTESIA ST + PARAMOUNT BLVD	BY	806
BELLFLWR (1965)	66.945	CT SPK CONC PVMT 17FT± S C/L ALONDRA BLVD 35FT± W C/L ILLINOIS ST	BY	807
BELLFLWR (1965)	66.322	CT SPK CONC PVMT @ C/L INT ALONDRA BLVD + GARFIELD AVE	BY	808
BELLFLWR (1965)	64.629	BT IN CONC PVMT 11FT± S C/L ALONDRA BLVD OPP HSE NO 7223 OUT	BY	809
BELLFLWR (1965)	65.299	L+BN IN CHIS SQ W CB 25FT± N BCR @ NW COR ORANGE AVE + ALONDRA BLVD 100FT± N + 30FT± W C/L INT MKD (BM)	BY	810
BASELINE (1965)	54.814	L+N CB E SIDE STUB END NR RD NR N SIDE 4FT WK IN FRONT OF HSE NO 7243 OUT	BY	835
BASELINE (1965)	73.581	L+T S CB ALONDRA BLVD 68FT± W C/L WOODRUFF AVE	BY	960
BASELINE (1965)	58.587	L+T CTR CB RET SW COR ASHWORTH ST + CLARK AVE	BY	1438
BELLFLWR (1965)	65.342	L+BR @ NW COR ARTESIA AVE + BELLFLOWER BLVD 5FT± W CTR CB RET	BY	1499
BASELINE (1965)	72.205	L+T CONC PVMT @ C/L INT COMPTON BLVD + COLORADO AVE OUT	BY	1514
BASELINE (1965)	72.721	L+BN E END GAS ISLAND 75FT± W + 52FT± S C/L INT COMPTON BLVD + VERMONT AVE	BY	1515
BASELINE (1965)	70.644	L+T W END CONC SLAB 10FT± N + 60FT± E C/L INT GARFIELD AVE + COMPTON BLVD @ FARMER BOYS MKT OUT	BY	1519
BASELINE (1965)	69.886	L+T W CONC STRIP 53FT± N C/L COMPTON BLVD AT HSE 7243	BY	1520
BASELINE (1965)	69.325	L+BN N CB COMPTON BLVD 80FT± W C/L INT TEXACO AVE 20FT± N C/L COMPTON BLVD OUT	BY	1521
BASELINE (1965)	70.095	SPK W CB SAN MARINO AVE 13FT± N BCR @ NW COR SAN MARINO AVE + COMPTON BLVD (MKD KT-5) OUT	BY	1522
BASELINE (1965)	69.669	L+T E EDGE CONC WK 65FT± E + 40FT± S C/L INT COMPTON BLVD + ORANGE AVE SE COR	BY	1523
BASELINE (1965)	69.181	L+S W CB ORANGE AVE 13FT± N BCR @ NW COR COMPTON + ORANGE AVE OUT	BY	1524
BELLFLWR (1965)	66.470	RDBM TAG N CB 1FT± W BCR @ NW COR ALONDRA BLVD + GARFIELD AVE 40FT± N + 78FT± W C/L INT	BY	1916
BELLFLWR (1965)	65.804	L+T MCR NE COR PARAMOUNT BLVD + JACKSON ST	BY	1925
BASELINE (1965)	69.583	L+T IN CONC APRON TO BLDG 7002 COMPTON BLVD 45FT± E C/L ORANGE AVE + 35FT± S C/L COMPTON BLVD @ SE COR OUT	BY	1930

QUAD-YEAR	ELEV	DESCRIPTION (INCLUDE QUAD AND YEAR IN DESCRIPTION)	BM NUMBER
BASELINE (1965)	69.517	L+T W END OF CONC APRON TO BLVD 7000 COMPTON BLVD 25FT# E C/L GARAGE AVE + 45FT# S C/L COMPTON BLVD	BY 1931
BASELINE (1965)	68.402	L+T W CB EL CAMINO AVE 10FT# N CB RET @ NW COR COMPTON BLVD + EL CAMINO AVE	BY 1932
BASELINE (1965)	68.536	L+T E CB 15FT# S CB RET @ SE COR FAULKNER AVE + COMPTON BLVD	BY 1933
BASELINE (1965)	68.512	L+T W CB SAN JOSE AVE 8FT# N CB RET @ NW COR SAN JOSE AVE + 1ST ALLEY N COMPTON BLVD	BY 1934
BASELINE (1965)	68.183	L+T W CB SAN JOSE AVE 8FT# S CB RET @ SW COR SAN JOSE AVE + 1ST ALLEY S COMPTON BLVD	BY 1936
BASELINE (1965)	67.014	CS MON C/L SAN JOSE AVE + APPROX N P/L OF 1ST ALLEY S COMPTON 130FT# S C/L INT SAN JOSE AVE + COMPTON BLVD	BY 1937
BASELINE (1965)	68.904	L+T W EDGE CONC APRON TO GARAGE OF HSE 15111 SAN JOSE AVE 135FT# W C/L SAN JOSE AV + 10FT# S C/L 1ST ALLEY S COMPTON BLVD	BY 1938
BASELINE (1965)	66.647	CS MON @ C/L INT OF COMPTON BLVD + SAN ANTONIO AVE IN WELL W/COVER 1FT DEEP STAMPED (RE 329)	BY 1940
BASELINE (1965)	88.069	RDBM TAG IN EAST ABUT. @ NE COR OF COMPTON BLVD BRIDGE OVER LA RIVER 0.4FT# N OF CB FACE	BY 1941
BASELINE (1965)	91.457	SET RDBM TAG IN CTR PIER OF COMPTON BLVD BRIDGE OVER LA RIVER	BY 1942
BASELINE (1965)	89.636	RDBM TAG IN WEST ABUT. @ NW COR OF COMPTON BLVD BRIDGE OVER LA RIVER 0.4FT# N OF CB FACE	BY 1943
BASELINE (1965)	77.738	RDBM TAG IN SOUTH CB COMPTON BLVD 65FT# W OF BRIDGE NO 53-823 OVER THE (LONG BEACH FREEWAY) 250FT# E OF GIBSON AVE	BY 1944
BASELINE (1965)	68.219	L+T 2FT# N CB RET @ W COR 1ST ALLEY N COMPTON BLVD ON GIBSON ST	BY 1945
BASELINE (1965)	67.402	L+T 7FT# S CB RET @ SW COR 1ST ALLEY S COMPTON BLVD ON GIBSON ST	BY 1947
BASELINE (1965)	67.037	L+T 2.5FT# S CB RET @ SE COR 1ST ALLEY S COMPTON BLVD ON WILLIAMS AVE	BY 1948
BASELINE (1965)	66.626	CS MON @ C/L INT WILLIAMS AVE + 1ST ALLEY S COMPTON BLVD	BY 1949
BASELINE (1965)	67.167	L+T S CB COMPTON BLVD 10FT# W CB RET @ SW COR COMPTON BLVD + WILLIAMS AVE	BY 1950
BASELINE (1965)	67.966	L+T W CB WILLIAMS AVE 20FT# N CB RET @ NW COR WILLIAMS AVE + 1ST ALLEY N COMPTON BLVD	BY 1951
BASELINE (1965)	66.753	L+T S CB COMPTON BLVD 10FT# W CB RET @ SW COR COMPTON BLVD + FRAILEY AVE	BY 1952
BASELINE (1965)	66.392	L+SPK S CB COMPTON BLVD 12FT# W CB RET @ SW COR COMPTON BLVD + ATLANTIC AVE (SPK MKD T-376)	BY 1953
BASELINE (1965)	66.364	L+T CTR CB RET @ SE COR COMPTON BLVD + ATLANTIC AVE	BY 1954
BASELINE (1965)	66.150	LA METRO WATER DIST BR DISC IN CONC SQ 31.3FT# S OF C/L OF COMPTON BLVD 13.3FT# W OF CB RET @ SW COR COMPTON BLVD + ATLANTIC AVE 78FT# SW OF C/L INT MKD (MET WATER DIST 56-W)	BY 1955

QUAD-YEAR	ELEV	DESCRIPTION (INCLUDE QUAD AND YEAR IN DESCRIPTION)	BM	NUMBER
BASELINE (1965)	68.780	L+T 1FT# S CB RET @ SW COR CENTER ST + LAKEWOOD BLVD	BY	2093
BASELINE (1965)	70.807	L+BN N CB PACIFIC AVE 65FT# E CB RET @ NE COR PACIFIC AVE + ALONDRA BLVD	BY	2113
BASELINE (1965)	66.454	L+BN N CB ALONDRA BLVD 1FTS8 W CB RET @ NW COR ALONDRA BLVD + DOWNEY AVE	BY	2342
BASELINE (1965)	66.530	L+T CTR CB RET @ SE COR ALONDRA BLVD + DOWNEY AVE	BY	2343
BASELINE (1965)	68.501	L+BN N CB COMPTON BLVD 13FT# E OF E RAIL OF SPRR 29FT# W CB RET @ NW COR ALAMEDA ST E DR + COMPTON BLVD 60FT# W C/L E DRIVE 28FT#N C/L COMPTON BLVD	BY	2356
BASELINE (1965)	68.698	L+BN S CB COMPTON BLVD 5FT# E OF E RAIL OF SPRR 29FT# W CB RET @ SW COR ALAMEDA ST E DR + COMPTON BLVD 70FT# W C/L E DRIVE 28FT# N C/L COMPTON BLVD	BY	2357
BASELINE (1965)	65.320	L+T 25FT# W C/L ALAMEDA ST E BARREL ON C/L PROD LAUREL ST TO THE E	BY	2358
BASELINE (1965)	65.707	L+T W CB @ BCR @ NW COR ALAMEDA ST E BARREL + LAUREL ST TO THE W 25FT# W + 32FT# N C/L INT	BY	2359
BASELINE (1965)	63.962	STEEL SPK WITH (X) ON TOP CTR S BCR TO DRWY OF COMPTON STREET DEPT NO 458 S ALAMEDA ST 29FT# E C/L E BARREL 180FT# N MYRRH ST	BY	2360
BASELINE (1965)	64.987	CS MON IN WELL 10IN DN 50FT# E C/L SPRR 27FT# W C/L ALAMEDA ST E BARREL + 18FT# S C/L PROD MYRRH ST TO THE E MKD (BM 5-22A)	BY	2361
BASELINE (1965)	64.527	L+BN W CB ALAMEDA ST E BARREL 12FT# E OF 5TH TELEGRAPH POLE N OF OLIVE ST 530FT# S OF MYRRH ST 25FT# W C/L	BY	2362
BASELINE (1965)	65.637	L+T IN CB ALONDRA BLVD 20FT# E OF E RAIL OF SPRR 40FT# W C/L ALAMEDA ST E BARREL 30FT# N C/L ALONDRA BLVD	BY	2363
BASELINE (1965)	64.771	L+T CTR CB RET @ SE COR ALONDRA BLVD + ALAMEDA ST W BARREL 45FT# E C/L W BARREL + 41FT# S C/L ALONDRA BLVD	BY	2364
BASELINE (1965)	62.558	L+T E CB ALAMEDA ST C/L PROD RAYMOND AVE 27FT# E C/L ALAMEDA ST	BY	2365
BASELINE (1965)	61.935	L+T E CB ALAMEDA ST C/L PROD TICHNCR ST	BY	2367
BASELINE (1965)	61.663	L+T E CB ALAMEDA ST C/L PROD CALDWELL ST 26FT# E C/L ALAMEDA ST	BY	2368
BASELINE (1965)	61.368	L+T E ALAMEDA ST C/L PROD JOHNSON ST	BY	2369
BASELINE (1965)	61.053	L+T E CB ALAMEDA ST C/L PROD BENNETT ST TO THE W	BY	2370
BASELINE (1965)	60.262	L+BN E CB ALAMEDA ST OPP MILE POST NO 495 SPRR	BY	2373
BASELINE (1965)	59.787	STD DISC TOP OF CONC POST 3FT# N OF MILE POST NO 495 SPRR + 38FT# E C/L SPRR 2FT# BELOW TOP OF RAIL MKD (Q 768 1945)	BY	2374

QUAD-YEAR	ELEV	DESCRIPTION (INCLUDE QUAD AND YEAR IN DESCRIPTION)	BM NUMBER
BASELINE (1965)	58.740	L+BN E CB ALAMEDA ST OPP PP NO 1328507E W SIDE SPRR + 4TH TP N OF ARTESIA AVE	BY 2375
BASELINE (1965)	62.940	L+BN E CB ALAMEDA ST @ ANGLE POINT OF WINGWALL @ NE COR BRIDGE NO 774 OVER COMPTON CREEK 22FT+ E C/L + 174FT+ N C/L CREEK + 400FT+ S ARTESIA BLVD	BY 2377
BASELINE (1965)	58.161	FC BR CAP @ S END OF WINGWALL @ NE COR SPRR BRIDGE 90FT+ E C/L ALAMEDA ST + 450FT+ S C/L ARTESIA BLVD MKD (RBM 44-33)	BY 2378
BASELINE (1965)	62.969	FC BR CAP 5FT+ S ANGLE POINT WINGWALL SW COR BRIDGE NO 774 ON ALAMEDA ST OVER COMPTON CREEK 28FT+ W C/L + 60FT+ S ARTESIA BLVD MKD (BM 44-33)	BY 2379
BASELINE (1965)	51.483	FC BR CAP E CB ALAMEDA ST 22FT+ E C/L OPP MAIN ENT DOMINQUEZ SEMINARY 0.25MI+ N DOMINQUEZ JCT 18FT+ S PP NO 241560E MKD (RBM 44-32)	BY 2380
BASELINE (1965)	52.813	FC BR CAP SE COR 8X8FT CONC VALVE BOX 58FT+ E C/L SPRR + 125FT+ E C/L ALAMEDA ST OPP MAIN ENT TO DOMINQUEZ SEMINARY MKD (BM 44-32)	BY 2381
BASELINE (1965)	50.572	L+BN W CB ALAMEDA ST 22FT+ W C/L OPP NE COR 8FT CHAIN LINK FENCE AROUND SO CAL EDISON SUB-STATION PROPERTY 650FT+ N DOMINGUEZ JCT	BY 2382
BASELINE (1965)	51.476	CS MON IN CONC FLUSH APPROX C/L PERR TRACKS 50FT+ W C/L ALAMEDA ST 56FT+ N OF N COR DOMINGUEZ JCT STA HSE BET ARTESIA BLVD + DEL AMO BLVD MKD (K-5 RE 2177 1942)	BY 2383
BASELINE (1965)	46.677	L+BN W CB ALAMEDA ST 22FT+ W C/L + 530FT+ S C/L LONG BEACH LINE PERR 37FT+ N TP NO 16767R	BY 2384
BASELINE (1965)	45.864	L+BN E CB ALAMEDA ST 22FT+ E C/L + 1630FT+ S C/L LONG BEACH LINE PERR 47FT+ S TP NO 662675H	BY 2385
BASELINE (1965)	44.201	L+BN E CB ALAMEDA ST W BARREL 22FT+ E C/L 3FT+ S TP NO 46810CH 2630FT+ W OF LONG BEACH LINE PERR	BY 2386
BASELINE (1965)	42.755	L+T E CB ALAMEDA ST W BARREL 22FT+ E C/L 3FT+ S TP NO 4469US 0.5MI+ N DEL AMO BLVD	BY 2387
BASELINE (1965)	42.890	STD USGS DISC IN CONC POST 3IN UP 30FT+ E C/L SPRR 55FT+ W C/L ALAMEDA ST E BARREL OPP BLDG NO 19600 (WOLF RANGE CORP) 4FT+ N TP NO LU 2FT+ W OF WHITE WOODEN WITNESS POST MKD (P768 1945)	BY 2388
BASELINE (1965)	41.353	L+BN E CB ALAMEDA ST W BARREL 22FT+ E C/L 3FT+ S OF TP NO 429291H OPP BLDG NO 19722	BY 2389
BASELINE (1965)	40.852	CUT SPK E CB ALAMEDA ST W BARREL 22FT+ E C/L 1FT+ W OF TP NO 45745CH 0.25MI+ N OF DEL AMO BLVD	BY 2390
BASELINE (1965)	37.838	CS MON IN WELL 2FT+ N C/L DEL AMO BLVD @ APPROX C/L OF 2 SETS OF PERR TRACKS W ALAMEDA ST W BARREL MKD (COMP J-7 1942 RE 2177)	BY 2391
BASELINE (1965)	37.707	L+T E CB 2FT+ S OF END OF CB @ SE COR ALAMEDA ST W BARREL + DEL AMO BLVD 4FT+ N TP NO 427134H 65FT+ S + 22FT+ E C/L INT	BY 2392
BASELINE (1965)	32.655	L+SPK E CB ALAMEDA ST W BARREL 22FT+ E C/L 48FT+ N PP NO 577434 1400FT+ S DEL AMO BLVD	BY 2393

QUAD-YEAR	ELEV	DESCRIPTION (INCLUDE QUAD AND YEAR IN DESCRIPTION)	BM NUMBER
BASELINE (1965)	32.081	L+BN E CB ALAMEDA ST W BARREL 22FT± E C/L 23FT± PP NO 577803R 900FT± N OF DOMINGUEZ ST	BY 2394
BASELINE (1965)	31.658	L+T MCR @ SE COR ALAMEDA ST + DOMINGUEZ ST	BY 2414
BASELINE (1965)	31.333	L+T S CB DOMINGUEZ ST 1FT± W DRWY HSE NO 2638 DOMINGUEZ ST	BY 2415
BASELINE (1965)	31.991	L+T S CB DOMINGUEZ ST 25FT± W DRWY HSE NO 2738 DOMINGUEZ ST (FRONT FIRE PLUG)	BY 2416
BASELINE (1965)	32.865	L+SPK W CB SANTA FE AVE 3FT± S CB RET @ SW COR DOMINGUEZ ST + SANTA FE AVE	BY 2417
BASELINE (1965)	67.506	L+T NR W ED OF CONC WK AROUND HSE NO 8700 ALONDRA BLVD 57FT± S + 25FT± E C/L INT ALONDRA BLVD + HAYTER ST	BY 2589
BASELINE (1965)	68.769	SPK N EDGE CONC CURB 22FT± N C/L ALONDRA BLVD 23FT± E TP NO M 13 10FT± W C/L SANTA ANA AVE 600FT± W CLARK AVE MKD (ML33)	BY 2595
BASELINE (1965)	67.466	CS MON 30FT± N + 70FT± E C/L INT ALONDRA BLVD + CLARK AVE 6FTS8 S OF N CB + 20FT± E OF CB RET @ NE COR ALONDRA MKD (BM 6-8 RE NC 63-1951)	BY 2596
BASELINE (1965)	73.352	L+T N CB 4FT± W CB RET @ NW COR ALONDRA BLVD + BLAINE AVE	BY 2597
BASELINE (1965)	73.486	L+T N CB 2FT± E CB RET @ NE COR ALONDRA BLVD + BLAINE AVE	BY 2598
BASELINE (1965)	74.185	L+BN S CB 1FT± W CB RET @ SW COR ALONDRA BLVD + BELLFLOWER BLVD	BY 2600
BASELINE (1965)	74.891	L+B NW CB 10FT± RET SW COR EUCALYPTUS AVE + ALONDRA BLVD	BY 2602
BASELINE (1965)	92.143	CO FLOOD CONTROL BR DISC IN SW COR BRIDGE NO B977 OVER SAN GABRIEL RIV 25FT± C/L ALONDRA BLVD MKD (BM 75-46)	BY 2611
BASELINE (1965)	89.341	CORP OF ENGINEERS BR DISC IN SE COR BRIDGE NO B977 OVER SAN GABRIEL RIV 25FT S C/L ALONDRA BLVD MKD (SG 18 1958)	BY 2612
BASELINE (1965)	73.118	L+T N CB 1FT± E CB RET @ NE COR ALONDRA BLVD SERVICE RD + DUMONT AVE	BY 2616
BASELINE (1965)	73.653	L+T N CB 1FT± E OF CB RET @ NE COR ALONDRA BLVD SERVICE RD + LEIBACHER AVE	BY 2617
BASELINE (1965)	72.510	CS REF MON IN WELL 9IN DN ON NW COR STUDEBAKER RD + ALONDRA BLVD 50FT± W C/L INT MKD (ARTESIA A-2 NO 3 1960)	BY 2618
BASELINE (1965)	72.948	CS REF MON IN WELL 9IN DN ON NE COR STUDEBAKER RD + ALONDRA BLVD 85FT± N + 50FT± E C/L INT MKD (ARTESIA A-2 NO 4 1960)	BY 2619
BASELINE (1965)	44.262	L+BN N CB CARSON ST @ NE COR CARSON ST + 1ST ALLEY W OF WOODRUFF AVE 1FT± E CB RET	BY 2678
BASELINE (1965)	44.772	L+T N CB CARSON ST @ NW COR CARSON ST + WOODRUFF AVE 2FT± W CB RET	BY 2679
BASELINE (1965)	39.985	RDBM TAG S CB 1FT± W BCR @ SW COR BELLFLOWER BLVD + CARSON ST 38FT± S + 70FT± W C/L INT	BY 2704

QUAD-YEAR	ELEV	DESCRIPTION (INCLUDE QUAD AND YEAR IN DESCRIPTION)	BM NUMBER
BASELINE (1965)	39.979	L+T @ CTR CB RET @ NE COR BELLFLOWER BLVD + CARSON ST	BY 2706
BASELINE (1965)	22.324	L+BN S CB SPRING ST 1FT# E CB RET @ SE COR SPRING ST + PALO VERDE AVE	BY 2930
BASELINE (1965)	21.636	CS MON (BR SPK IN CONC) @ INT PALO VERDE AVE + SPRING ST 18IN DN	BY 2931
BASELINE (1965)	21.191	CS MON 8FT# S C/L SPRING ST (N SERVICE RD) 15FT# E C/L LOMINA AVE PROD	BY 2940
BASELINE (1965)	22.737	L+N S CB SPRING ST (N SERVICE RD) C/L LOMINA AVE PROD	BY 2941
BASELINE (1965)	21.996	L+N CTR CB RET S END PARKWAY OF SAN ANSELINE AVE + SPRING ST SERVICE RD	BY 2942
BASELINE (1965)	22.842	L+N S CB SPRING ST N SERVICE RD + CHATWIN AVE PROD	BY 2943
BASELINE (1965)	22.439	L+BN N CB SPRING ST 1FT# E CB RET @ NE COR SPRING ST + BELLFLOWER BLVD	BY 2944
BASELINE (1965)	21.880	L+BN N CB SPRING ST 1FT# W CB RET @ NW COR SPRING ST + BELLFLOWER BLVD	BY 2945
BASELINE (1965)	21.532	CS MON INT SPRING ST + BELLFLOWER BLVD N EDGE	BY 2946
BASELINE (1965)	70.929	L+N IN CONC CB 13" DIA DAIRY PLATFORM 100FT# S HSE NO 16404 STUDEBAKER RD 70FT# E C/L	BY 3371
BASELINE (1965)	69.627	CS MON 5FT E C/L STUDEBAKER RD 5FT S C/L 166TH ST 10IN DEEP	BY 3372
BASELINE (1965)	62.601	L+T DRWY HSE NO 17121 STUDEBAKER RD 50FT# W C/L 1FT# IN FROM N EDGE OF DRWY	BY 3373
BASELINE (1965)	55.605	CS MON W/CASE + COVER @ C/L INT STUDEBAKER RD + 183RD ST	BY 3378
BASELINE (1965)	53.153	L+T N EDGE CONC DRWY TO HSE NO 18810 50FT# E C/L STUDEBAKER RD	BY 3379
BASELINE (1965)	51.192	L+T 1FT# BACK FROM CONC WK TO HSE NO 10969 SOUTH ST @ NW COR STUDEBAKER RD + SOUTH ST	BY 3380
BASELINE (1965)	70.519	L+BN W CB PARAMOUNT BLVD 1FT N CB RET @ NW COR JEFFERSON ST + PARAMOUNT BLVD	BY 3628
BASELINE (1965)	67.545	CS MON 16FT# W C/L PARAMOUNT BLVD 150FT# S C/L MADISON ST MKD (16" DIA CONC SYS TRI STA CLEARWATER E-Z RE 21771938)	BY 3629
BASELINE (1965)	68.006	L+BN IN N CB 1FT# E BCR @ NE COR ALONDRA BLVD + PARAMOUNT BLVD 40FT# N + 48FT# E C/L INT	BY 3630
BELLFLWR (1965)	60.908	L+BR CTR CB RET @ SW COR ARTESIA ST + PARAMOUNT BLVD	BY 3631
BELLFLWR (1965)	52.394	L+BN E SIDE CONC BASE S GATE POST CF WIRE FENCE 45FT# W C/L PARAMOUNT BLVD 6FT# NE COR EDISON CO TRANSFORMER ON THE RICHFIELD OIL CO PROPERTY 5900 BLOCK OF PARAMOUNT BLVD	BY 3634
BASELINE (1965)	50.814	L+T E CB OBISPO AVE 6 FT N BCR @ 1 FT IN CB RET NE COR OBISPO AVE + SOUTH ST 65 FT N + 10 FT E C/L INT	BY 3637

QUAD-YEAR	ELEV	DESCRIPTION (INCLUDE QUAD AND YEAR IN DESCRIPTION)	BM NUMBER
BASELINE (1965)	54.035	L+BN N CB SOUTH ST 1FT# W CB RET @ NW COR LAKEWOOD BLVD + SOUTH ST	BY 3639
BELLFLWR (1965)	63.743	L+B CTR CB RET @ NW COR BIXBY AVE TO RAMONA ST (@ SE COR OF LARGE ISLAND)	BY 3669
BASELINE (1965)	56.682	L+BN S CB ALLINGTON ST 75FT# W C/L WOODRUFF AVE	BY 3676
BASELINE (1965)	56.895	L+BR W CB 3FT# N BCR @ NW COR ALLINGTON ST + CANEHILL AVE 75FT# N + 18FT# W C/L INT	BY 3679
BASELINE (1965)	57.450	RDBM TAG S CB 1FT# E BCR @ SE COR ALLINGTON ST + CANEHILL AVE 30FT S + 60FT# E C/L INT	BY 3680
BASELINE (1965)	55.940	CS MON C/L INT PALO VERDE AVE + ALLINGTON ST	BY 3681
BASELINE (1965)	56.172	L+T NW COR LOADING PLATFORM DAIRY BARN 65FT# S HSE NO 5810 PALO VERDE AVE 50FT# E C/L PALO VERDE AVE	BY 3684
BASELINE (1965)	49.786	CS MON 88FT# S C/L SOUTH ST 9FT# E C/L PALO VERDE AVE	BY 3686
BASELINE (1965)	66.037	FC BR CAP @ E END BRIDGE OVER THE SAN GABRIEL RIV ON SOUTH ST @ SE COR OF BRIDGE BM 74-54	BY 3687
BASELINE (1965)	70.625	L+T @ W END OF BRIDGE OVER SAN GABRIEL RIV ON S SOUTH ST @ SW COR BRIDGE ON S CB	BY 3688
BASELINE (1965)	58.142	L+T 1FT# S CB RET @ SW COR ASHWORTH ST + WOODRUFF AVE	BY 3702
BELLFLWR (1965)	62.303	RAM SET S CB 2FT# E BCR @ SW COR WOODRUFF AVE + ARTESIA BLVD 40FT# S + 73FT# W C/L INT	BY 3705
BASELINE (1965)	65.602	CS MON IN WELL 24FT W C/L ALAMEDA ST E BARREL 48FT N C/L COMPTON BLVD MKD (BM 5-21 RE 329 1951)	BY 4130
BASELINE (1965)	68.099	CS MON 14FT# N C/L COMPTON BLVD + 57FT# E C/L ORANGE AVE IN WELL W/COVER JOIN DEEP MKD (BM 6-15 1951 RE 63)	BY 4323
BELLFLWR (1965)	63.051	CSMON IN WELL W/COVER 12IN DN @ C/L INT 1ST ALLEY N ALONDRA BLVD @ 1ST ALLEY N	BY 4329
BELLFLWR (1965)	64.063	L+T E CB FULL AVE 1FT# N CB RET 1ST ALLEY N ALONDRA BLVD	BY 4330
BELLFLWR (1965)	81.932	FC BR DISC E ABUT BRIDGE B-1132 OVER LA RIV 46FT# N C/L ALONDRA BLVD MKD (BM 4-23)	BY 4331
BELLFLWR (1965)	64.288	L+BN W CB HUNSAKER AVE 40FT# W + 134 ⁸⁵ FT# N C/L INT ALONDRA BLVD + HUNSAKER AVE	BY 4335
BELLFLWR (1965)	64.867	RDBM TAG N CB 1FT# E BCR @ NE COR ALONDRA BLVD + HUNSAKER AVE 70 ⁴⁰ FT# N + 101FT# E C/L INT	BY 4336
BASELINE (1965)	51.669	L+T NR E EDGE CONC W/COVER 105FT# E C/L PARAMOUNT BLVD S OF END OF WK	BY 4564
BASELINE (1965)	50.012	L+T NR SE COR CONC SLAB @ ENT BLDG NO 5584 PARAMOUNT BLVD 60FT# E C/L PARAMOUNT BLVD + 105FT# S C/L 56TH ST	BY 4565
BASELINE (1965)	51.016	RDBM TAG 1.5FT# E BCR @ NE COR PARAMOUNT BLVD + SOUTH ST 40FT# N + 75FT# E C/L INT	BY 4567

QUAD-YEAR	ELEV	DESCRIPTION (INCLUDE QUAD AND YEAR IN DESCRIPTION)	BM NUMBER
BASELINE (1965)	67.046	L+SPK N CB C/M OUT BLVD 10FT# E C/L WHITE AVE PROD MKD (T-3)	BY 4568
BASELINE (1965)	67.464	L+SPK 3FT# E CB RET @ SE COR COMPTON BLVD + BRADFIELD AVE	BY 4571
BASELINE (1965)	65.974	CITY OF COMPTON MON IN WELL 18IN DP C/L COMPTON BLVD + C/L PROD BRADFIELD AVE N	BY 4572
BASELINE (1965)	66.237	CITY OF COMPTON MON IN WELL 12IN DP @ C/L INT COMPTON BLVD + LONG BEACH BLVD 5FT# N OF MON TO THE S	BY 4574
BASELINE (1965)	66.562	RDBM TAG OUT BURRIS AVE 15FT# N CB RET @ NE COR COMPTON BLVD <i>OK</i>	BY 4575
BASELINE (1965)	66.121	L+T 15FT# S CB RET W CB BURRIS AVE @ SW COR COMPTON BLVD	BY 4576
BASELINE (1965)	64.431	L+SPK CTR CB RET @ SE COR SANTA FE AVE + COMPTON BLVD	BY 4577
BASELINE (1965)	64.695	L+SPK 1FT# N CB RET @ NE COR SANTA FE AVE + COMPTON BLVD	BY 4578
BASELINE (1965)	57.688	CS MON IN WELL 8IN DN ON SW COR CLARK AVE + ASHWORTH ST 38FT S + 30FT W C/L INT MKD (BM 32 3)	BY 4961
BASELINE (1965)	46.763	RDBM TAG W CB 6FT N BCR OF ISLAND @ NW COR PARAMCUNT BLVD + HARDWICK ST 45FT N + 40FT W C/L INT	BY 4962
BASELINE (1965)	46.925	RDBM TAG W CB 2FT S BCR OF ISLAND @ SW COR PARAMCUNT BLVD + HARDWICK ST 37FT S + 43FT W C/L INT	BY 4963
BASELINE (1965)	44.577	RDBM TAG W CB 3FT OUT @ NW COR LAKEWOOD BLVD + CARSON ST 67FT# 4FT# W C/L INT	BY 4978
BASELINE (1965)	38.411	USC+GS BR CAP NR S END E ABUT CONC BRIDGE 50FT# S C/L CARSON ST + 500FT# E CLARK AVE MKD (E 78C RESET 1953)	BY 4996
BASELINE (1965)	37.838	LB MON IN WELL 5IN OUT COR CARSON ST + CLARK AVE 31FT# N + 50FT# E C/L INT	BY 4997
BASELINE (1965)	49.841	L+T N CB 9FT# W OUT LAKEWOOD DR 38FT# N 50FT# W C/L INT (BM)	BY 4999
BASELINE (1965)	55.214	USC+GS BR CAP E END CONC BRIDGE 100FT# W LAKEWOOD DR NR CTR GOLF COURSE 50FT# N C/L CARSON ST MKD (C780 1946)	BY 5000
BASELINE (1965)	55.249	SP HD BT E END HDWL CONC BRIDGE 100FT# W LAKEWOOD DR NR CTR GOLF COURSE 50FT# S C/L CARSON ST MKD (U)	BY 5001
BASELINE (1965)	56.142	RDBM TAG N CB 1FT# W ENT CATCH BASIN 40FT# N C/L + 25FT# E C/L PROD LEVELSIDE AVE	BY 5002
BASELINE (1965)	55.835	RDBM TAG S CB 40FT# S C/L CARSON ST + 3FT# W C/L PROD LEVELSIDE AVE	BY 5003
BASELINE (1965)	60.337	RDBM TAG N CB 2FT# E BCR @ NE COR CARSON ST + PARAMCUNT BLVD 40FT# N + 80FT# E C/L INT	BY 5004
BASELINE (1965)	61.207	RDBM TAG N CB 45FT# OUT @ NW COR CARSON ST + PARAMCUNT BLVD 40FT# N + 120FT# W C/L INT	BY 5005

QUAD-YEAR	ELEV	DESCRIPTION (INCLUDE QUAD AND YEAR IN DESCRIPTION)	BM	NUMBER
BELLFLWR (1965)	67.340	L+BRAC W CB 1FT± N BCR @ NW COR CARSON ST + DEEBOYER AVE 9CFT± N + 18FT± W C/L INT MKD (BM)	BY	5006
BELLFLWR (1965)	62.340	RDBM TAG N CB 1FT± E BCR @ NE COR CHERRY AVE + BIXBY AVE 3CFT± N + 88FT± E SPLIT CF CBS	BY	5008
BELLFLWR (1965)	62.332	RDBM TAG S CB 3FT± E BCR @ SE COR CHERRY AVE + BIXBY AVE 3CFT± S + 91FT± E SPLIT OF CBS	BY	5009
BELLFLWR (1965)	56.729	LONG BEACH MON IN WELL 8IN DN @ OR NR C/L INT 37TH ST + CHERRY AVE	BY	5010
BELLFLWR (1965)	57.174	RDBM TAG E CB 74FT± E C/L CHERRY AVE + 33FT± N C/L PROD 37TH ST	BY	5011
BELLFLWR (1965)	54.739	L+BRAC N SIDE CONC APRON OF DRWY TO REPUBLIC SUPPLY CO 48FT± E C/L CHERRY AVE + 513FT± N C/L WARDLOW RD MKD (BM)	BY	5012
BELLFLWR (1965)	54.172	RDBM TAG E CB CHERRY AVE 40FT± E C/L NR CITY OF LAKEWOOD BOUNDARY 22 FT± N C/L WARDLOW RD	BY	5013
BASELINE (1965)	53.469	CITY OF LONG BEACH MON IN WELL 8IN DN CN NW COR CHERRY AVE + WARDLOW RD 5FT± N OF N CB + 45FT± W OF W CB MKD (BM 93)	BY	5014
BASELINE (1965)	58.199	BR DISC VERTICAL IN NE COR WALL OF LONG BEACH WATER DEPT PUMP HSE SW COR CHERRY AVE + WARDLOW RD 70FT± S + 219FT± W C/L INT	BY	5015
BASELINE (1965)	36.648	RDBM TAG W CB 6FT± N BCR @ NW COR PALO VERDE AVE + CARSON ST 82FT± N + 30FT± W C/L INT	BY	5026
BASELINE (1965)	36.602	RDBM TAG E CB 6FT± N BCR @ NE COR PALO VERDE AVE + CARSON ST 82FT± N + 30FT± E C/L INT	BY	5027
BASELINE (1965)	42.582	L+SPK W CB 13FT± ANSELINE AVE 78FT± N + 28FT± W C/L INT	BY	5028
BASELINE (1965)	45.002	CS MON FLUSH W/WLK 2FT± NW CTR CB RET @ NW COR CARSON ST + WOODRUFF AVE 57FT± N + 48FT± W C/L INT MKD (K9 RM NO 3)	BY	5029
BASELINE (1965)	42.264	RDBM TAG S CB OF N SERVICE RD 54FT± N C/L CARSON ST 150CFT± E INT WOODRUFF AVE + CARSON ST OPP ENT TO WATER PUMP HSE	BY	5030
BASELINE (1965)	41.809	RDBM TAG N CB OF N SERVICE RD 82FT± N C/L CARSON ST 150CFT± E INT WOODRUFF AVE + CARSON ST OPP ENT TO WATER PUMP HSE	BY	5031
BASELINE (1965)	56.200	L+T E CB 2FT± S BCR @ SE COR WOODRUFF AVE + ALLINGTON ST 76FT± S + 40FT± E C/L INT MKD (BM)	BY	5045
BELLFLWR (1965)	61.602	RDBM TAG N CB 36FT± + ARTESIA BLVD 40FT± + 112FT± W C/L INT	BY	5047
BASELINE (1965)	62.699	RDBM TAG 2FT± S BCR @ SW COR PARAMOUNT BLVD + WARWOOD RD 47FT± S + 76FT± W C/L INT	BY	5052
BASELINE (1965)	62.678	RDBM TAG W CB 2FT± N BCR @ NW COR PARAMOUNT BLVD + WARWOOD RD 48FT± N + 76FT± W C/L INT	BY	5053
BASELINE (1965)	60.701	RDBM TAG W CB 2FT± S BCR @ SW COR PARAMOUNT BLVD + GREENTOP ST 46FT S + 76FT± W C/L INT	BY	5054
BASELINE (1965)	60.418	RDBM TAG W CB 2FT± N BCR @ NW COR PARAMOUNT BLVD + GREENTOP ST 46FT± N + 76FT± W C/L INT	BY	5055

QUAD-YEAR	ELEV	DESCRIPTION (INCLUDE QUAD AND YEAR IN DESCRIPTION)	BM NUMBER
BASELINE (1965)	55.850	RDBM TAG W CB 90 FT S BCR @ SW COR PARAMOUNT BLVD BY + CENTRALIA ST 50 FT N + 76 FT W C/L INT	5056
BASELINE (1965)	54.531	RDBM TAG W CB 2 FT N BCR @ NW COR PARAMOUNT BLVD BY + CENTRALIA ST 47 FT N + 76 FT W C/L INT	5057
BASELINE (1965)	63.935	R D MON NR N END CONC HDWL CULV 27 FT E C/L BY MAIN TRACK SPRR 45 FT W C/L ALAMEDA ST E BARREL 17 FT S C/L PROD RAYMOND ST MKD (19)	5783
BASELINE (1965)	63.762	USC+GS MON NR S END CULV HDWL 10 FT W C/L SPRR BY + 70 FT E C/L ALAMEDA ST W BARREL 90 FT N C/L PROD CALDWELL ST MKD (T 615 1941)	5784
BASELINE (1965)	54.889	MWD MON 3 FT E OF E CB ALAMEDA ST 26 FT E C/L BY 42 FT N PP NO 241565E OPP GATE NO 18011 0.5 MI+ S ARTESIA BLVD MKD (56E 1933)	5785
BASELINE (1965)	52.893	RDBM MON FLUSH 4 FT E OF E CB ALAMEDA ST 26 FT+ BY E C/L + 19 FT S PP NO 241565E 61 FT S OF S END CONC CULV 0.5 MI+ S ARTESIA BLVD MKD (BM 15)	5786
BASELINE (1965)	49.277	USC+GS MON NR N END SFRR CULV HDWL 8 FT W C/L BY SFRR TRACKS 67 FT E C/L ALAMEDA ST + 450 FT S C/L INT ALAMEDA ST + PERR MKD (F52 1926)	5787
BELLFLWR (1965)	63.907	RD BM TAG W CB 30 FT S BCR @ NW COR ATLANTIC AVE BY + ALONDRA BLVD 10 FT N + 36 FT W C/L INT	6117
BELLFLWR (1965)	64.842	L+T E CB 2 FT S BCR @ SE COR ATLANTIC AVE + BY MYRRH ST 27 FT S + 36 FT E C/L INT	6120
BELLFLWR (1965)	64.852	L+T W CB 1 FT S BCR @ SW COR ATLANTIC AVE + BY MYRRH ST 26 FT S + 36 FT W C/L INT	6121
BASELINE (1965)	31.540	CS MON 10 IN DN 14 FT S + 72 FT W C/L INT BY DOMINGUEZ ST + SANTA FE AVE MKD (BM 8-57 RE 63)	6146
BASELINE (1965)	53.875	BT SPK IN CONC ABUT OF UPRR + PERR CROSSING BY OVER LONG BEACH FREEWAY NR DOMINGUEZ ST 18 FT W OF W RAIL PERR + 8 FT N OF N RAIL UPRR	6147
BASELINE (1965)	57.126	CS BR DISK CTR S HDWL W CONC ABUT UPRR BRIDGE BY OVER LA RIVER @ MILE POST 17.13 10 FT E /F W END HDWL MKD (BM 8-54B 1960)	6148
BASELINE (1965)	57.172	CHIS SQ TOP NE COR CONC ABUT 9 FT N OF N RAIL BY UPRR @ W END BRIDGE OVER LA RIVER @ MILE POST 17.13	6149
BASELINE (1965)	57.263	CS BR DISK CTR N HDWL E CONC ABUT 6 FT E UPRR BY BRIDGE OVER LA RIV @ MILE POST 17.13 MKD (BM 8-54B 1960)	6150
BASELINE (1965)	44.061	USC + GS DISK 3 FT ABOVE GROUND IN E FACE OF W BY CONC ABUT UPRR BRIDGE OVER LONG BEACH BLVD 1 FT+ S OF N END ABUT + 49 FT S /F S CB 48TH ST + 14 FT W OF W CB LONG BEACH BLVD MKD (Z-799 1946)	6151
BASELINE (1965)	102.613	4 IN BR TABLET IN WELL 18 FT N OF S CB LINE PROD BY SAN ANTONIO DR + 33 FT E OF W CB LINE PROD LONG BEACH BLVD MKD (LA COUNTY SURVEY CONTROL SYSTEM TRAVERSE STATION CLEARWATER B-8A RE 2177)	6152
BASELINE (1965)	88.070	4 IN BR TABLET IN WELL 40 FT E OF W CB PROD LONG BY BEACH BLVD + 31 FT S OF N CB PROD WARDLOW RD MKD (LA COUNTY SURVEY CONTROL SYSTEM TRAVERSE STATION CLEARWATER B-10 RE 2177)	6153

QUAD-YEAR	ELEV	DESCRIPTION (INCLUDE QUAD AND YEAR IN DESCRIPTION)	BM NUMBER
BASELINE (1965)	24.359	LONG BEACH CITY ENG MON IN WELL IN LEFT TURN LANE OF N BARREL SPRING ST 8FT± N OF N CB + 16FT± E OF W END CTR ISLAND @ INT OF LAKEWOOD BLVD + SPRING ST MKD (CITY ENGINEER MONUMENT)	BY 6155
BASELINE (1965)	22.571	L+BRAC IN CHIS SQ N CB 4FT± W BCR @ NW COR SPRING ST + WOODRUFF AVE 45FT± N + 78FT± W C/L INT	BY 6156
BASELINE (1965)	23.150	L+BRAC E CB 1FT± N BCR @ NE COR SPRING ST + WOODRUFF AVE 40FT± E + 54FT± N C/L INT	BY 6157
BASELINE (1965)	21.809	L+BRAC IN CHIS SQ W CB 6FT± S BCR @ SW COR SPRING ST + SNOWDEN AVE 100FT± S + 18FT± W C/L INT	BY 6158
BASELINE (1965)	23.214	RDBM TAG S CB 1FT± E BCR @ SE COR SPRING ST + SNOWDEN AVE 45FT± S + 48FT± E C/L INT	BY 6159
BASELINE (1965)	26.972	USC+GS MON NW COR CONC HWY 88FT N C/L TYLER ST + 72FT W C/L ALAMEDA ST MKD (R 768 1945)	BY 6983
BASELINE (1965)	27.055	USC+GS DISK IN S FACE OF BRIDGE PILLAR SAN DIEGO FRWY 3FT ABOVE GND 40 FT N OF 223RD ST + 40FT W/O C/L ALAMEDA ST MKD (LS 70 1964)	BY 6984
BASELINE (1965)	37.118	USC+GS MON IN N FACE OF CONC VALVE BOX 12IN UP 27FT W C/L ALAMEDA ST 5 FT N LA CITY BCRY LINE (0.5MI S SEPULVEDA BLVD)	BY 6985
BASELINE (1965)	34.320	CS BM IN CONC FLUSH 26145 FT W C/L ALAMEDA ST 47FT E/O C/L BLINN AVE 16 FT 6 FT CHAIN LINK FENCE TO TANK FARM MKD (BM 5-80 1964 RE 5869)	BY 6986
BASELINE (1965)	34.900	USC+GS MON 4IN DN @ NW COR ALAMEDA ST + DEL AMO BLVD 44FT W OF E BARREL 37FT N C/L DEL AMO BLVD MKD (S 615 1941)	BY 6987
BASELINE (1965)	72.854	CS MON 10IN DN @ NW COR ALONDRA BLVD + BELL- FLOWER BLVD 33FT N + 73FT W C/L INT MKD (BM 6-7 1951)	BY 7028
BASELINE (1965)	69.133	CS MON FL @ SE COR ALONDRA BLVD + LAKEWOOD BLVD 42FT S + 187FT E C/L INT MKD (BM 6-9A 1958)	BY 7029
BASELINE (1965)	67.879	CS MON IN WELL 12IN DN @ NE COR COMPTON BLVD + GARFIELD AV 16 FT N + 76FT E C/L INT MKD (BM 6-14)	BY 7037
BASELINE (1965)	67.219	CS MON IN WELL 12IN DN @ C/L INT GIBSON ST + SAN LUIS ST MKD (CO SUR MON RE 329)	BY 7038
BASELINE (1965)	65.992	CS MON IN WELL 12IN DN @ C/L INT SAN LUIS ST + LIME AVE MKD (CO SUR MON RE 329)	BY 7039
BASELINE (1965)	26.868	FC MON IN WK FL 1FT BACK OF CB FACE @ NE COR 45FT E + 48FT N C/L INT WARDLOW RD + PALO VERDE AVE	BY 7055
BASELINE (1965)	30.557	L+BN 1FT S BCR @ SE COR CONANT ST + PALO VERDE AVE 30FT E + 55FT S C/L INT	BY 7056
BASELINE (1965)	30.696	L+T 1FT E BCR @ NE COR CONANT ST + PALO VERDE AVE 65FT E + 20FT N C/L INT	BY 7057
BASELINE (1965)	34.107	USGS MON 3.5FT DN 75FT S + 47FT W C/L INT CARSON ST + PALO VERDE AVE 5FT E OF ROW OF SYCAMCRE TREES MKD (LBBM 512 A2 1923)	BY 7058

QUAD-YEAR	ELEV	DESCRIPTION (INCLUDE QUAD AND YEAR IN DESCRIPTION)	BM NUMBER
BASELINE (1965)	23.188	CS MON IN HAND HOLE @ C/L INT SPRING ST + CLARK AVE	BY 7059
BASELINE (1965)	23.334	LONG BEACH CITY MON IN WELL LEFT TURN LANE LAKE- WOOD BLVD + SPRING ST 8FT W OF W CB ISLAND + 65FT N OF S END ISLAND	BY 7060
BASELINE (1965)	35.223	LB CITY MON @ NW COR SPRING ST + REDONDO AVE 40FT N + 45FT W C/L INT 3FT W OF BCR MKD (RE 3111-BM 8-4C CLB 1963)	BY 7061
BASELINE (1965)	35.217	L+BR IN CHIS SQ TOP OF CB @ SW COR SPRING ST + REDONDO AVE 41FT S + 55FT W C/L INT	BY 7062
BASELINE (1965)	46.888	LB CITY MON 14IN DN @ NELY COR SPRING ST + TEMPLE AVE 40FT NLY + 35FT ELY C/L INT MKD (541)	BY 7063
BASELINE (1965)	47.989	L+N N CB SPRING ST 37FT W OF BCR @ NW COR SPRING ST + TEMPLE AVE 80FT W + 40FT N C/L INT	BY 7064
BASELINE (1965)	78.988	L+BR IN CHIS SQ 20FT S BCR @ N END C B @ SW COR SPRING ST + CHERRY AVE 70FT S + 25FT W C/L INT	BY 7065
BASELINE (1965)	75.460	L+BN E CB 1FT S BCR @ NE COR CHERRY AVE + SPRING ST 72FT N + 50FT E C/L INT MKD (BM)	BY 7066
BASELINE (1965)	69.618	LB CITY MON 10IN DN @ NE COR WARDLOW RD + ORANGE AVE 33FT E + 51FT N C/L INT	BY 7067
BASELINE (1965)	69.074	LB CITY MON 21IN DN @ C/L INT ORANGE AVE + WARDLOW RD MKD (BM)	BY 7068
BASELINE (1965)	87.173	LB CITY MON IN WELL @ C/L INT ATLANTIC AVE + WARDLOW RD USE SOUTH ONE OF TWO MONS	BY 7069
BASELINE (1965)	88.209	RAMSET W CB LONG BEACH BLVD 35FT N BCR 30FT W + 120FT N C/L INT WARDLOW RD + LONG BEACH BLVD	BY 7070
BASELINE (1965)	110.497	CS TRI MON 34FT W OF E CB LONG BEACH BLVD + 216FT S C/L INT ROOSEVELT RD + LONG BEACH BLVD MKD (B-9-RE 2177-2)	BY 7071
BASELINE (1965)	97.747	USC+GS BR DISC FL IN FRONT OF HOUSE 4307 LONG BEACH BLVD 1FT W OF CB + 2FT N OF LIGHT STAND NO 409 MKD (A-780 1946)	BY 7072
BASELINE (1965)	92.364	CS TRI MON 10IN DN 200FT N C/L INT 44TH ST + LONG BEACH BLVD 34FT W OF E CB MKD (CLEARWATER B-8 RE 2177)	BY 7073
BASELINE (1965)	40.276	CS TRI MON 2FT E C/L INT ARBOR ST + LONG BEACH BLVD MKD (CLEARWATER A 7 RE 2177)	BY 7074
BELLFLWR (1965)	67.635	L+BN S CB CARSON ST 150FT E C/L UPRR R/W + 42FT S C/L CARSON ST 6FT E DR TO BOWLING ALLEY	BY 7075
BELLFLWR (1965)	60.140	CITY OF LONG BEACH RD HD BOLT MON 6IN DN 6IN W/O CONC WK 5FT N BCR 40FT E + 75FT N C/L PARAMOUNT BLVD + ARTESIA BLVD	BY 7077
BASELINE (1965)	72.275	CS BR CAP 10IN DN 74FT W C/L MC NAB AVE + 5FT ELY OF N CB HAYFORD ST MKD (BM 9-1A RE 5869 1961)	BY 7078
BASELINE (1965)	61.454	BT SPK 1FT S/O N EDGE DR TO HSE 17323 STUDEBAKER RD 160FT N + 55FT W C/L INT ARTESIA BLVD + STUDEBAKER RD	BY 7079
BASELINE (1965)	61.746	L+BN 2FT E BCR @ NE COR ARTESIA BLVD + STUDEBAKER RD 81FT E + 42FT N C/L INT	BY 7080

QUAD-YEAR	ELEV	DESCRIPTION (INCLUDE QUAD AND YEAR IN DESCRIPTION)	BM NUMBER
BASELINE (1965)	61.271	L+BN 5FT N BCR @ SW COR ARTESIA BLVD + STUDE- BAKER RD 43FT W + 72FT S C/L INT	BY 7081
BASELINE (1965)	67.312	L+BN E SIDE OF SECOND SIG CONTROL BOX 66FT W C/L STUDEBAKER RD + 18FT S C/L RR TRACKS 0.2MI S ARTESIA BLVD	BY 7082
BASELINE (1965)	55.953	L+BN W CB 1FT N BCR @ NW COR STUDEBAKER RD + 183RD ST 73FT W + 40FT W C/L INT MKD (BM)	BY 7083
BASELINE (1965)	49.671	CS MON 12IN DIAM 15FT N C/L INT SCUTH ST + STUDEBAKER RD	BY 7084
BASELINE (1965)	66.313	COE BR DISK FL @ NE COR BR OVER SAN GABRIEL RIVER ON SOUTH ST 0.2MI E/O PALO VERDE AVE MKD (SG 12-1958)	BY 7085
BASELINE (1965)	42.927	L+BN 1FT E BCR @ NW COR CARSON ST + SAN ANSELINE AVE 54FT E + 40FT N C/L INT	BY 7087
BASELINE (1965)	44.234	CS MON FL IN WK 45FT E BCR @ NE COR LAKEWOOD BLVD + CARSON ST 40FT N + 108FT E C/L INT MKD (G 9 A RM NC 6 RE 63)	BY 7088
BASELINE (1965)	49.641	L+T N CB 8FT E BCR @ NE COR CARSON ST + LAKE- WOOD DR 38FT N + 55FT W C/L INT	BY 7089
BASELINE (1965)	49.336	L+T S CB 34FT W C/L PROD OBISPO AVE + 40FT S C/L SCUTH ST	BY 7090
BASELINE (1965)	50.219	RDBM TAG S CB 38FT W BCR @ SW COR SOUTH ST + DOWNEY AVE 40FT S + 97FT W C/L INT	BY 7091
BASELINE (1965)	49.462	L+T E CB 50FT S BCR @ SE COR SOUTH ST + DOWNEY AVE 117FT S + 31FT E C/L INT	BY 7092
BASELINE (1965)	53.324	RDBM TAG W CB 3FT S BCR @ SW COR LAKEWOOD BLVD + SOUTH ST 80FT S + 45FT W C/L INT	BY 7093
BASELINE (1965)	55.141	L+BN W CB SERVICE RD 1FT S BCR @ SW COR HEDDA ST + LAKEWOOD BLVD 47FT S + 89FT W C/L INT	BY 7094
BASELINE (1965)	55.228	L+BRAD W CB SERVICE RD 1FT N BCR @ NW COR LAKE- WOOD BLVD + HEDDA ST 47FT N + 89FT W C/L INT	BY 7095
BASELINE (1965)	56.499	L+BRAD W CB SERVICE RD 5FT N BCR @ SW COR LAKE- WOOD BLVD + ASHWORTH ST 40FT S + 90FT W C/L INT	BY 7096
BASELINE (1965)	56.131	FC BRS CAP FLUSH E CB SE COR LAKEWOOD BLVD + ASHWORTH ST 23FT S + 57FT E C/L INT MKD (FC BM 74-230 1946)	BY 7097
BASELINE (1965)	57.486	L+T N CB 17 W C/L PROD GRAYWOOD AVE 18FT N C/L ASHWORTH ST	BY 7098
BASELINE (1965)	57.326	L+BN 1FT E BCR @ SE COR ASHWORTH ST + GRAY- WOOD AVE 42 FT W + 18FT S C/L INT	BY 7099
BASELINE (1965)	58.574	FC BRS DISC E CB 5FT N BCR @ NE COR ASHWORTH ST + CLARK AVE 47FT N + 28FT E C/L INT MKD (FCBM 120-200)	BY 7100
BASELINE (1965)	58.188	L+BN CB 17FT W C/L PROD LORELEI AVE 17FT N C/L ASHWORTH ST	BY 7101
BASELINE (1965)	58.137	1FT E BCR @ SE COR LORELEI AVE + ASHWORTH ST 17FT S + 42FT E C/L INT	BY 7102

QUAD-YEAR	ELEV	DESCRIPTION (INCLUDE QUAD AND YEAR IN DESCRIPTION)	BM NUMBER
BASELINE (1965)	58.283	L+T N CB C/L PRCD DUNROBIN AVE 20FT N C/L ASH-WORTH ST	BY 7103
BASELINE (1965)	58.311	L+BN S CB 1 FT E BCR @ SE COR DUNROBIN AVE + ASHWORTH ST 41FT E + 20FT S C/L INT	BY 7104
BASELINE (1965)	58.434	L+T W CB 1FT N BCR @ NW COR ASHWORTH ST + WOODRUFF AVE 46FT N + 18FT W C/L INT	BY 7105
BASELINE (1965)	56.446	L+T W CB 3FT S BCR @ SW COR PALC VERDE AVE + ALLINGTON AVE 70FT S + 25FT W C/L INT	BY 7106
BASELINE (1965)	48.659	L+T E CB @ BCR @ SE COR PARAMOUNT BLVD + CANDLEWOOD ST 66FT N + 10FT E C/L INT	BY 7107
BASELINE (1965)	48.699	L+T E CB 8FT N BCR @ NE COR PARAMOUNT BLVD + CANDLEWOOD ST 71FT N + 40FT E C/L INT	BY 7108
BASELINE (1965)	50.835	RDBM TAG E CB 1FT S BCR @ SE COR PARAMOUNT BLVD + SCUTH ST 76FT S + 40FT E C/L INT	BY 7109
BELLFLWR (1965)	65.403	L+BN N CB 65FT W BCR @ NW COR ALONDRA BLVD + ORANGE AVE 40FT N + 130FT W C/L INT MKD (BM)	BY 7274
BELLFLWR (1965)	62.146	L+BN E CB 65FT N BCR @ NE COR LAKEWOOD BLVD + FLOWER ST ABT 100FT N + 40FT E C/L INT MKD (BM)	BY 7275
BELLFLWR (1965)	61.960	FC BR DISC FL W CB 10FT S BCR @ SW COR LAKEWOOD BLVD + FLOWER ST ABT 40FT S + 40FT W C/L INT MKD (BM 75-7C)	BY 7276
BELLFLWR (1965)	59.404	L+T E CB 55FT N C/L @ NE COR LAKEWOOD BLVD + ARTESIA BLVD ABT. 122FT N + 40FT E C/L INT	BY 7277
BELLFLWR (1965)	58.930	FC BR DISC FL E CB 40FT S BCR @ SE COR LAKEWOOD BLVD + ARTESIA BLVD 110FT S + 40FT E C/L INT MKD (BM 74-22C)	BY 7278
BELLFLWR (1965)	56.010	BT SPK S CB 4FT W BCR @ SW COR ARTESIA BLVD + DOWNEY AVE 4 FT S + 59FT W C/L INT CB CUT (BM) + PAINTED (BM)	BY 7279
BELLFLWR (1965)	55.879	L+BN E CB 2FT N BCR @ NE COR ARTESIA BLVD + DOWNEY AVE 68FT N + 30FT W C/L INT MKD (BM)	BY 7280
BELLFLWR (1965)	70.029	L+T E CB 20FT S BCR @ SE COR BELLFLOWER BLVD + FLOWER ST 60FT S + 30FT E C/L INT	BY 7281
BELLFLWR (1965)	66.641	L+T 30FT E C/L WOODRUFF AVE + 20FT N C/L PRCD MAPLE ST	BY 7282
BELLFLWR (1965)	69.710	L+T E CB 2FT N BCR @ NE COR WOODRUFF AVE + FLORA VISTA ST 30FT N + 30FT E C/L INT	BY 7283
BELLFLWR (1965)	67.940	L+T IN CB 20FT S C/L FLORA VISTA ST + 20FT W C/L VIEW PARK AVE	BY 7284
BELLFLWR (1965)	70.138	L+BN W CB 2.5 FT E BCR @ SW COR BELLFLOWER BLVD + FLOWER ST 4 FT S + 30FT W C/L INT MKD (BM)	BY 7310